

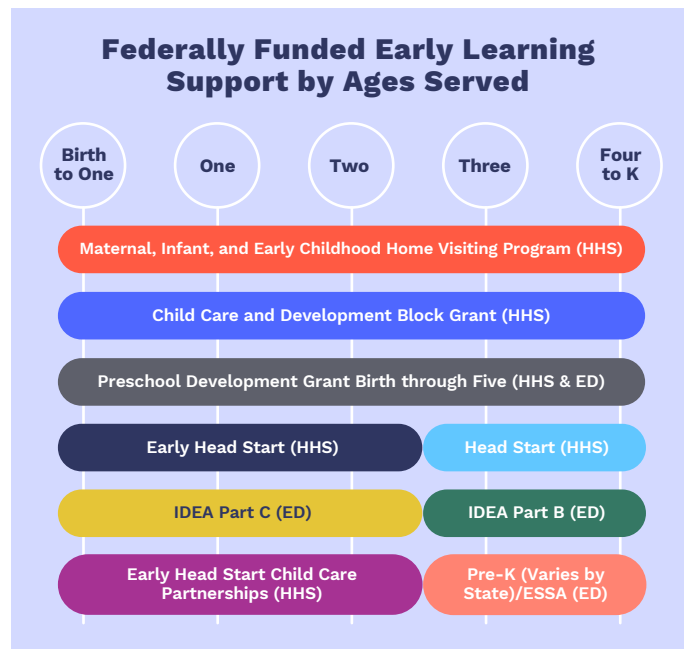
# ABCs of Federal Early Learning and Care Funding Streams



Every year, millions of low-income children from birth through age five benefit from the array of federal early learning and care programs. Each is governed by specific legislative and regulatory requirements; targets different age groups; and serves families in a variety of settings, including home visiting and

home- and center-based opportunities. Together, they form an effective mixed-delivery system supporting the care, education, and healthy development of children living in poverty that prioritizes parental choice and children's individual needs.

## Federally Funded Early Learning Support by Ages Served



## Child Care and Development Block Grant

**WHAT IT DOES** Funds states, territories, and tribal entities to develop and implement a subsidy program for low-income families with children under age 13 (the majority of children served are under 5; subsidies can be used for care of children ages 5-13 while they are not in school) and improve the quality of child care available

**WHO IT SERVES** Children from families with income below 85% of the state median income (average \$50,808 annually for a family of 3); additional state limits allowed

**15%** Eligible Served<sup>1</sup>



**2,100,000**

Children Served Nationwide

FY 2019 Funding

**\$8,193,000,000**

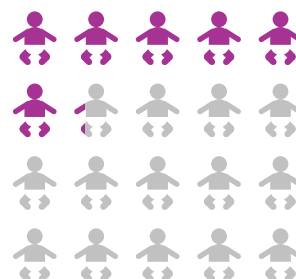
(\$50 million above FY 2018)

## Head Start

**WHAT IT DOES** Funds public and private organizations and tribal entities to provide high-quality early childhood education and other health, nutrition, and family engagement and support services to three- and four-year-old children living in poverty

**WHO IT SERVES** Children from families with income below federal poverty guidelines (under \$25,750 for a family of 4); who are receiving TANF or supplemental security income (SSI); or who are experiencing homelessness; children in foster care

**31%** Eligible Served<sup>2</sup>



**732,711**

Children Served Nationwide

FY 2019 Funding

**\$10,060,000,000**

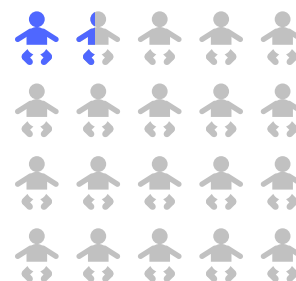
(\$197 million above FY 2018)

## Early Head Start\*

**WHAT IT DOES** Provides services to infants and toddlers from low-income families to promote their physical, cognitive, social, and emotional development and enable parents to fulfill their roles as primary caregivers and teachers of their children

**WHO IT SERVES** Children from families with income below federal poverty guidelines (under \$25,750 for a family of 4); are receiving TANF or SSI; or are experiencing homelessness; children in foster care

**7%** Eligible Served<sup>3</sup>



**154,352**

Children Served Nationwide

FY 2019 Funding

**\$10,060,000,000**

(\$197 million above FY 2018)

<sup>1</sup> FY 2015; Government Accountability Office (<https://www.gao.gov/assets/700/696930.pdf>)

\*Funding provided within Head Start

<sup>2</sup> 2017; National Head Start Association ([https://www.nhsa.org/files/resources/2017-fact-sheet\\_national.pdf](https://www.nhsa.org/files/resources/2017-fact-sheet_national.pdf))

<sup>3</sup> Ibid.

## Early Head Start-Child Care Partnerships\*

**WHAT IT DOES** Early Head Start grantees partner with local child care providers—both home- and center-based—who serve low-income children receiving child care subsidies to support the child care providers in meeting Head Start Performance Standards and providing comprehensive wrap-around services to meet children's health, nutrition, and other comprehensive development needs

**WHO IT SERVES** Children from families with income below federal poverty guidelines (under \$25,750 for a family of 4); are receiving TANF or SSI; or are experiencing homelessness; children in foster care

**32,000<sup>4</sup>** **\$805,000,000**  
Number of Children Directly Benefiting FY 2019 Funding (\$50 million above FY 2018)

## Maternal, Infant, and Early Childhood Home Visiting

**WHAT IT DOES** Funds states, territories, and tribal entities to develop and implement evidence-based, voluntary home visiting services to families considered at-risk; home visitors meet with parents in their homes from pregnancy through their child's kindergarten entry to help lay the foundation for the health, education, development, and economic self-sufficiency of the entire family

**WHO IT SERVES** Children from families living in at-risk communities as identified in a statewide needs assessment

**156,297<sup>5</sup>** **\$400,000,000**  
Families Served Nationwide FY 2019 Funding (equal to FY 2018)

## Temporary Assistance for Needy Families

**WHAT IT DOES** Awards block grants to states to design and operate programs that help low-income families achieve self-sufficiency, including child care, state preschool, and other early education programs

**WHO IT SERVES** Financially needy families with children; exact financial eligibility rules and benefit amounts are determined by states as they have discretion over program requirements

**\$1,529,468,501**  
FY 2017 Funding (\$141 million above FY 2016)

## Preschool Development Grant Birth Through Five

**WHAT IT DOES** Competitive grant program to help states strengthen early childhood systems for children from birth through age five. In the first year, funds state-level needs assessments and strategic planning with the goals of maximizing parental choice, improving transitions within early care and learning programs and with elementary schools and improving overall quality of programs; subsequent years will focus on implementation

**WHO IT SERVES** All 56 states, territories, and commonwealths were eligible to apply

**46 states** **\$250,000,000**  
Received 1-year planning grants FY 2019 Funding (equal to FY 2018)

## Individuals with Disabilities Education Act (IDEA)

**WHAT IT DOES** IDEA Part C provides early intervention services to infants and toddlers with disabilities and their families; IDEA Part B provides special education and related services to children and youth ages 3 through 21

**WHO IT SERVES** Children with a disability

**IDEA PART C**  
**778,910**

**IDEA PART B  
(AGES 3-5)**  
**773,595<sup>7</sup>**

Children Served Nationwide

**IDEA PART C**  
**\$470 million**  
(21.3 million above FY 2018)

**IDEA PART B, SEC. 619**  
**\$391.12 million**  
(\$7.28 million above FY 2018)

FY 2019 Funding

## Child Care Access Means Parents in School

**WHAT IT DOES** Provides campus-based child care programs to college students, including before- and after-school services

**WHO IT SERVES** Low-income parents who are eligible for a Federal Pell grant

**5,000** **\$50,000,000**  
Approximate Parents Served FY 2019 Funding (equal to FY 2018)

<sup>4</sup> 2017 ([https://www.acf.hhs.gov/sites/default/files/ece/ehs\\_ccp\\_brochure.pdf](https://www.acf.hhs.gov/sites/default/files/ece/ehs_ccp_brochure.pdf))

<sup>5</sup> FY 2017 (<https://mchb.hrsa.gov/sites/default/files/mchb/MaternalChildHealthInitiatives/HomeVisiting/pdf/programbrief.pdf>)

<sup>6</sup> FY 2017 Early Care and Learning Expenditures (<https://www.acf.hhs.gov/ofa/resource/tanf-financial-data-fy-2017>)

<sup>7</sup> 2017-18 (<https://www2.ed.gov/programs/osepidea/618-data/static-tables/index.html>)